

EMFAF

2021 - 2027



To help achieve sustainable fisheries & conserve & restore marine biological resources



Rialtas na hÉireann
Government of Ireland



Arna chomhchistiú ag
an Aontas Eorpach

Co-Funded by the
European Union



Foras na Mara
Marine Institute

What is EMFAF?

The EMFAF runs from 2021 to 2027 and supports the EU common fisheries policy (CFP), the EU maritime policy and the EU agenda for international ocean governance.



It provides support for developing innovative projects ensuring that aquatic and maritime resources are used sustainably.

Furthermore, the EMFAF helps fulfil the objectives of the **European Green Deal**, the roadmap for the EU climate and environmental policies.



As a global ocean actor and a major producer of seafood, the EU has a responsibility to protect and sustainably use the oceans and their resources. It is also in the EU's socio-economic interest to guarantee the availability of food supplies, the competitiveness of the maritime economy and the livelihood of coastal communities.

The fund helps achieve sustainable fisheries and conserve and restore marine biological resources.

It also helps achieve the **UN's Sustainable Development Goal 14** ('conserve and sustainably use the oceans, seas and marine resources'), to which the EU is committed.

*What are the main **EMFAF priorities** implemented at the Marine Institute?*

The Data Collection, Marine Biodiversity and Marine Knowledge Schemes are established under Priority 1 (Sustainable Fisheries) and Priority 4 (Strengthen Ocean Governance) of Ireland's Operational Programme (OP) and are co-funded by the Irish Government and the European Union.

EMFAF Priorities Implemented by Marine Institute:



What are the main **Actions** of Priority 1 **Data Collection Scheme**?



To ensure compliance with **Data Collection Framework** legislation Ireland's Data Collection scheme consists of actions including;

- Developing a fit for purpose data collection programme in line with legal requirements
- Collecting transversal data and spatial distribution of fishing effort for vessels under 12m
- Addressing specific data and knowledge gaps for data poor stocks to
- Respond to advisory demands
- Addressing emerging advisory needs for stock assessment, management strategy evaluation, mixed fisheries and ecosystem modelling
- Improving sampling efficiencies
- Addressing specific scientific questions in relation to stock ID, mixing, assessment methods and migration patterns
- Optimising and maximise research survey outputs

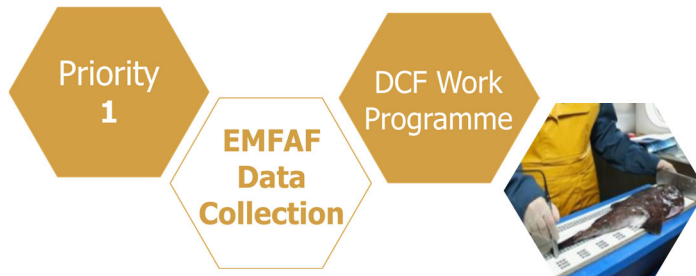
Ireland's **Data Collection Framework Programme** involves cross-agency collaboration with:

- Bord Iascaigh Mhara (BIM) - socio-economic data collection in fisheries and aquaculture sectors
- Inland Fisheries Ireland (IFI) – Diadromous species & Marine Recreational Fisheries

<https://www.dcmmap-ireland.ie/>

The website informs the national agencies, the EU Commission and various stakeholders about Ireland's implementation of the DCF.

*What is the current **Data Collection Scheme work programme?***

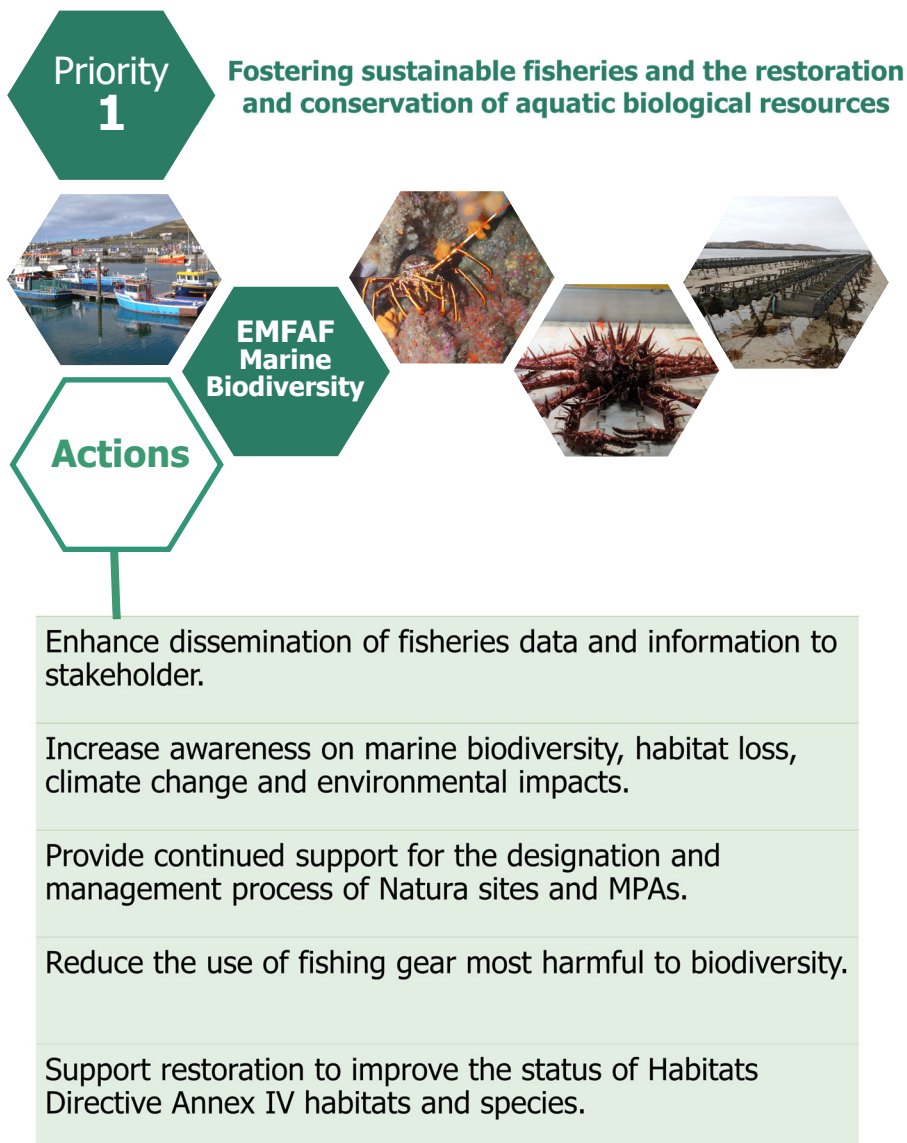


Scientific advice, based on reliable data, is key for policy development and decision making, for example, in the process of setting fishing opportunities and the adoption of conservation and management measures. The Work Programme includes:

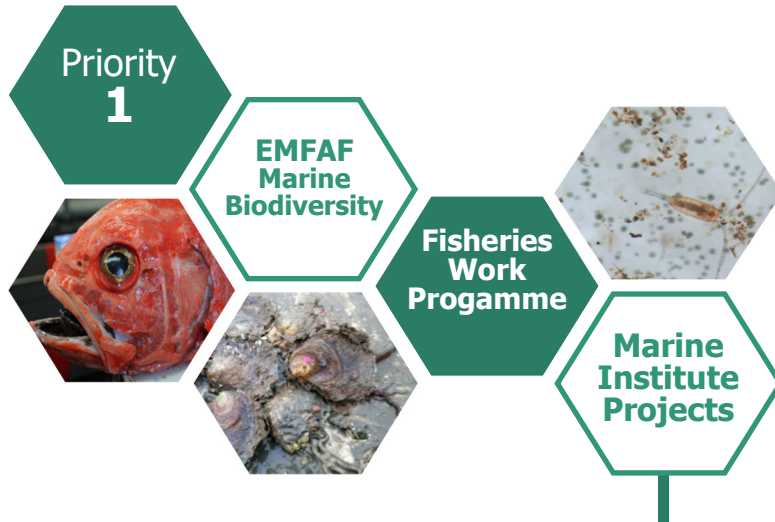
- Port and market sampling of landings.
- At sea sampling on commercial vessels.
- A comprehensive research vessel survey programme.
- Diadromous species data collection in fresh water.
- Recreational fisheries data collection.
- Sampling programmes on small scale coastal fisheries.
- Impact of Fisheries on Marine Biological Resources.
- Extensive collection and analyses of socio-economic data relating to fisheries and aquaculture.

Good Science Supporting Sustainability

What are the main **Actions** of Priority 1 **Marine Biodiversity Scheme** ?

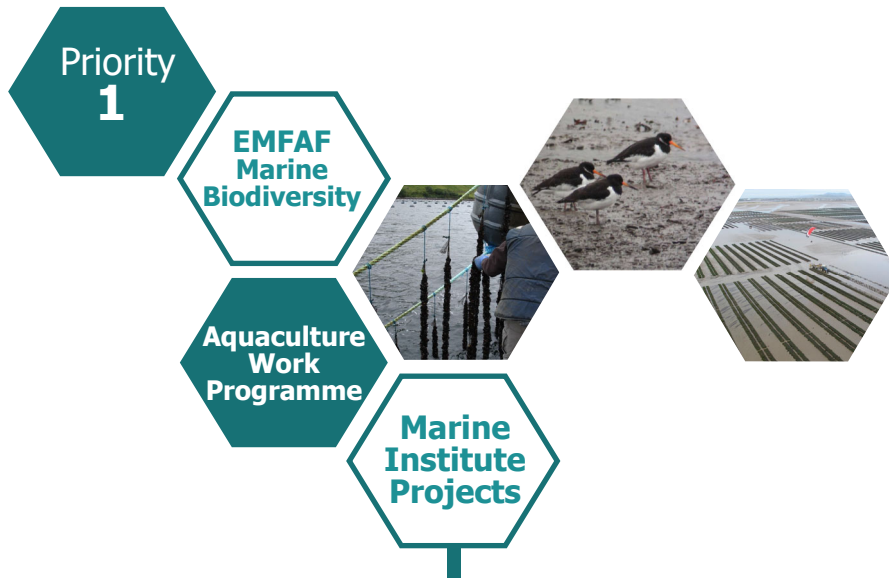


*What projects have been implemented in the **Marine Biodiversity Fisheries work programme?***



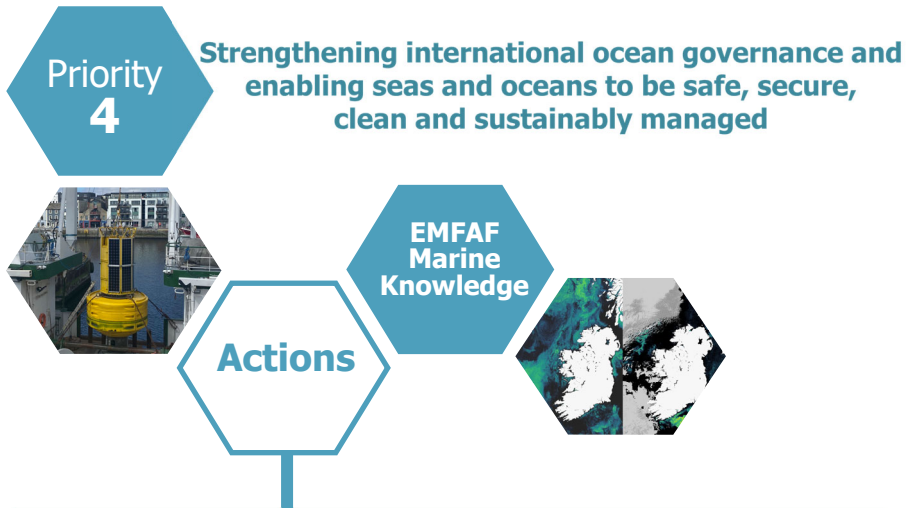
Species & Habitat Restoration	1. Management of the crayfish fishery to protect critically endangered species.
	2. Restoration of native oysters in Ireland.
Natura Fisheries Support	3. Implementation of Natura measures for fisheries.
	4. Inshore vessel monitoring systems (iVMS).
Biodiversity Policy Support	5. Monitoring the recovery of exploited deep-water species.
	6. Continuous Plankton Recorder in Irish waters.
	7. Sea Shelf and Upper Slope Habitat Assessment.
	8. Ecosystem data collection on Irish fisheries surveys .
	9. Impacts of fishing and pollution on ETP species.
Outreach	10. Pollack Stock Identification for Management - Genetics SID.
	11. Mollusc shell structure and morphology as an indicator of vulnerability to Ocean Acidification – baseline study.
	12. Outreach, Admin and tech support.

*What projects have been implemented in the **Marine Biodiversity Aquaculture work programme?***



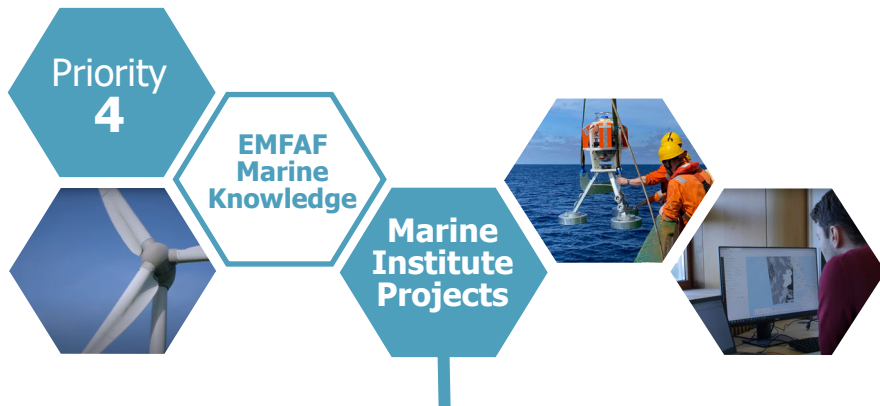
Natura Aquaculture Support	1. Appropriate assessment of aquaculture activities in Natura 2000 Special Protection Areas.
	2. Appropriate assessment of aquaculture activities in Natura 2000 Special Areas of Conservation.
	3. ECCA: Ecological Carrying Capacity of Marine Ecosystems.
	4. Measure the effectiveness of mitigation measures of managed activities (aquaculture) carried out in Natura sites
	5. Expertise to carry out AA reporting as it relates to aquaculture and fisheries.
	6. Salmon Stock Baseline Farm Introgression
	7. Mapping the distribution of the Pacific oyster, <i>Magallana gigas</i> in Ireland.
	8. Expertise to carry out environmental and ecological assessment as it relates to aquaculture licensing.

What are the main **Actions** of Priority 4 **Marine Knowledge Scheme** ?



- Data collection, access and analysis that will deliver on national obligations and measure changes in the marine environment
- Ensure data compatibility
- Improve the understanding of the impacts of human activities and climate change on the marine environment
- Streamline Marine data coordination and processing needs
- Enhance data quality to support evidence-based decision making
- Ensure that Irish marine data and knowledge are made available to all relevant stakeholders
- Understand different stakeholder needs and to ensure EMFAF programme outputs are available to developers, stakeholders and end users in appropriate formats
- Increase cooperation, research collaboration and information sharing at national, EU and international level
- Quantify the potential of coastal habitats as carbon sinks
- Improve understanding of marine activities that could increase resilience to climate change

*What projects are being implemented by the **Marine Knowledge Scheme**?*



Data and digital evidence services	1. Coordination and integration of marine data to national and regional portals.
	2. Advanced data analytics tools for scientific advice.
	3. Data processing tools for marine observations.
Climate impacts in coastal and marine waters	1. Reference laboratory for Marine Biogeochemistry Essential Climate Variables.
	2. Integrating remote sensing into ecosystem change and marine management processes.
	3. Developing Irish climate projection and decision support tools.
	4. Establish and run sentinel observing sites for essential ocean variables.

Interventions that contribute to strengthening sustainable sea and ocean management through the promotion of marine knowledge.





What are EU Operations of Strategic Importance?

Under the 2021–2027 EU funding period, *Operations of Strategic Importance (OSIs)* were introduced as a new regulatory requirement across all Common Provisions Regulation (CPR) funded programmes, including the **EMFAF**. These are special projects selected by Member States and Managing Authorities because of their **high strategic impact**, strong visibility potential, and importance in telling the “story” of EU investment.

For EMFAF, this means identifying operations that strongly advance strategic goals such as sustainable fisheries, marine biodiversity protection, blue economy development, or ocean governance.

The goal is to:

- Showcase flagship EMFAF investments
- Demonstrate EU added value in marine and fisheries sectors
- Highlight stories that resonate with citizens
- Strengthen accountability and transparency
- Support communication campaigns at EU level

Within the Marine Institutes EMFAF Schemes certain **large, high-impact, strategic projects** clearly meet the OSI criteria because they contribute significantly to EMFAF priorities and are central to marine governance and sustainability objectives.



What are Irelands Operations of Strategic Importance?

1. Management of the crayfish fishery to protect critically endangered species

A nationally important conservation intervention To reduce interactions with endangered and protected species and habitats in the project area. A crayfish fishery management plan will be developed which will include a transition to low impact economically viable fishing gear and other measures consistent with the biodiversity strategy of delivering favourable outcomes with respect to socio-economic inclusion.



2. Marine Knowledge Scheme

Disseminating knowledge and data relating to the marine environment and climate change which improves knowledge on the state of the marine environment needed for environmental targets and national obligations. It improves coordination, processing, sharing and quality of marine data nationally and internationally.



3. Data Collection Scheme

The EMFAF funded Data Collection Scheme involves the collection, management and use of biological, environmental, technical and socio-economic data in the fisheries and aquaculture sectors to support the Common Fisheries Policy (CFP) through scientific advice. Robust scientific data is required to evaluate the state of fish stocks, the profitability of the different fleet segments and the effects of fisheries and aquaculture on the ecosystem. The data collected is used to inform stock assessments, policy decisions and long-term conservation measures.



Managing Authority EMFAF 2021-2027	Specified Public Beneficiary Body
Department of Agriculture Food & the Marine Clogheen, Clonakilty, Co. Cork. P85 TX47 Tel: (+)353 (0)23 885 9500 www.agriculture.gov.ie/emfaf	Marine Institute Rinville, Oranmore, Co. Gal- way, H91 R673 Phone: (+)353 (0)91 38 7200 emfaf-info@Marine.ie www.marine.ie



emfaf.marine.ie

As a global ocean actor and a major producer of seafood, the EU has a responsibility to protect and sustainably use the oceans and their resources. It is also in the EU's socio-economic interest to guarantee the availability of food supplies, the competitiveness of the maritime economy and the livelihood of coastal communities



**For further details contact:
Email: emfaf-info@Marine.ie**

Website: emfaf.marine.ie



Rialtas na hÉireann
Government of Ireland



**Arna chomhchistiú ag
an Aontas Eorpach**
Co-Funded by the
European Union



Foras na Mara
Marine Institute

Co-funded by the Government of Ireland and the European Union